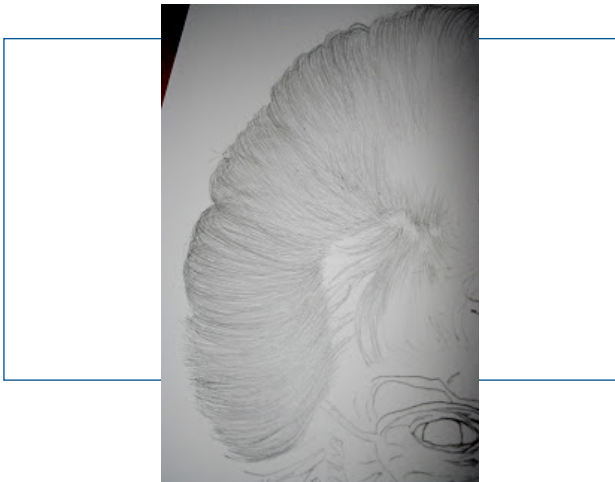
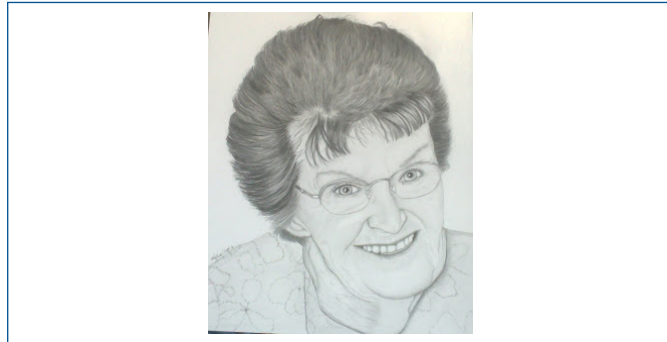
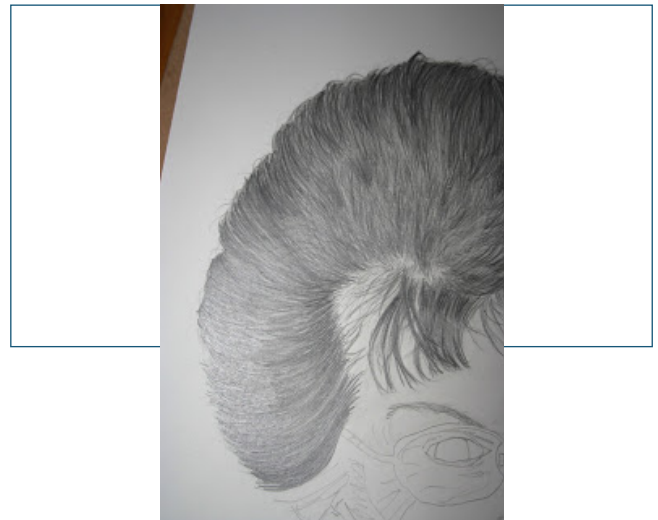


Layering Hair with Graphite



To shape how the hair will fall, I use a 2H pencil. Do not press too hard or you will make indents in the paper that will cause issues with the further darker applications. This is just to map out, shape and cover white of paper.

Secondly, I use a B pencil to start building the density, add more shape/ tone and movement. This commission has dark shadows around the back of the style and darker at the face. The light shone on he bulk of the curve. Use different pressures in different directions so that the hair is not superficial. Watch how the



Now start using a 2B pencil for layers of tones. Get lost in how each strand builds a more natural look.

Layering Hair with Graphite continued....

Use 5B pencil to add shadows and eraser for light to make a more dimensional look. Put a stray hair or group of hairs out of place. No one has perfectly aligned hairs all in a row.

Continue to push and pull the pencil layers until you are happy with the finished project.

